

Oregon All State Symphonic Band Audition



Instrument Parts

These parts are used by OMEA with permission from WMEA

These materials are for admittance into the OMEA Symphonic Band **ONLY**. These audition materials are for students from school with an OSAA classification of 1A – 4A. Students from 5A and 6A high schools may not use these materials at all.

Wind and percussion students wishing to be considered for the Wind Ensemble or Orchestra **MUST** use the audition materials for the Wind Ensemble and Orchestra. These materials are available at: www.oregonmusic.org

The conductor score can be found separately at www.oregonmusic.org.

IMPORTANT: PERCUSSIONISTS MUST AUDITION ON TWO OF THE THREE AUDITION INSTRUMENTS: Mallets, Snare Drum, Timpani

SPECIAL NOTE

Please note that for the OMEA Symphonic Band auditions, the following instruments must audition as specified:

Piccolo

- If you are competent on piccolo, have access to an instrument and would like to also be considered for piccolo, complete the flute audition on flute first, then record this additional track on Piccolo.
- **Piccolo Track 1:** Play the music for Flute Exercise 3 on piccolo.

English horn

- If you are competent on English horn, have access to an instrument and would like to also be considered for English horn, complete the oboe audition on oboe first, then record this additional track on English horn.
- **English horn Track 1:** Play the music for oboe Exercise 2 on English horn.

OMEA All-State Symphonic Band Audition

Record and upload each exercise as a separate mp3 file.

Flute

Exercise 1

Chromatic Scale

♩ = 60

Exercise 2

Etude Espressivo

♩ = 96

Exercise 3

Etude Technical

♩ = 120

Make sure you take the repeat on your recording

OMEA All-State Symphonic Band Audition

Record and upload each exercise as a separate mp3 file.

Oboe

Exercise 1 Chromatic Scale

♩ = 60

Musical notation for Exercise 1: Chromatic Scale. The piece is in 4/4 time with a key signature of two flats (Bb, Eb). The tempo is marked as quarter note = 60. The notation shows a single melodic line starting on G4, moving chromatically up to C5, and ending with a whole note G4.

Exercise 2 Etude Espressivo

♩ = 96

Musical notation for Exercise 2: Etude Espressivo. The piece is in 3/4 time with a key signature of three flats (Bb, Eb, Ab). The tempo is marked as quarter note = 96. The notation consists of three staves. The first staff starts with a *mp* dynamic and ends with a *mf* dynamic. The second staff features a *f* dynamic. The third staff continues the melodic line with various dynamics and articulation marks.

Exercise 3 Etude Technical

♩ = 120

Musical notation for Exercise 3: Etude Technical. The piece is in 4/4 time with a key signature of two flats (Bb, Eb). The tempo is marked as quarter note = 120. The notation consists of three staves. The first staff starts with a *mf* dynamic. The second staff features dynamics of *f*, *pp*, and *f*. The third staff features dynamics of *f*, *mf*, and *f*.

Make sure you take the repeat on your recording

OMEA All-State Symphonic Band Audition

Record and upload each exercise as a separate mp3 file.

B \flat Clarinet

Exercise 1 Chromatic Scale

$\text{♩} = 60$

Exercise 2 Etude Espressivo

$\text{♩} = 96$

Exercise 3 Etude Technical

$\text{♩} = 120$

Make sure you take the repeat on your recording

OMEA All-State Symphonic Band Audition

Record and upload each exercise as a separate mp3 file.

Alto Clarinet

Exercise 1

Chromatic Scale

♩ = 60



Exercise 2

Etude Expressivo

♩ = 96

Exercise 3

Etude Technical

♩ = 120

Make sure you take the repeat on your recording

OMEA All-State Symphonic Band Audition

Record and upload each exercise as a separate mp3 file.

Bass Clarinet

Exercise 1

Chromatic Scale

♩ = 60



Exercise 2

Etude Espressivo

♩ = 96



Exercise 3

Etude Technical

♩ = 120



Make sure you take the repeat on your recording

OMEA All-State Symphonic Band Audition

Record and upload each exercise as a separate mp3 file.

Bassoon

Exercise 1 Chromatic Scale

♩ = 60



Exercise 2 Etude Espressivo

♩ = 96



Exercise 3 Etude Technical

♩ = 120



Make sure you take the repeat on your recording

OMEA All-State Symphonic Band Audition

Record and upload each exercise as a separate mp3 file.

Alto Sax

Exercise 1

Chromatic Scale

♩ = 60



Exercise 2

Etude Espressivo

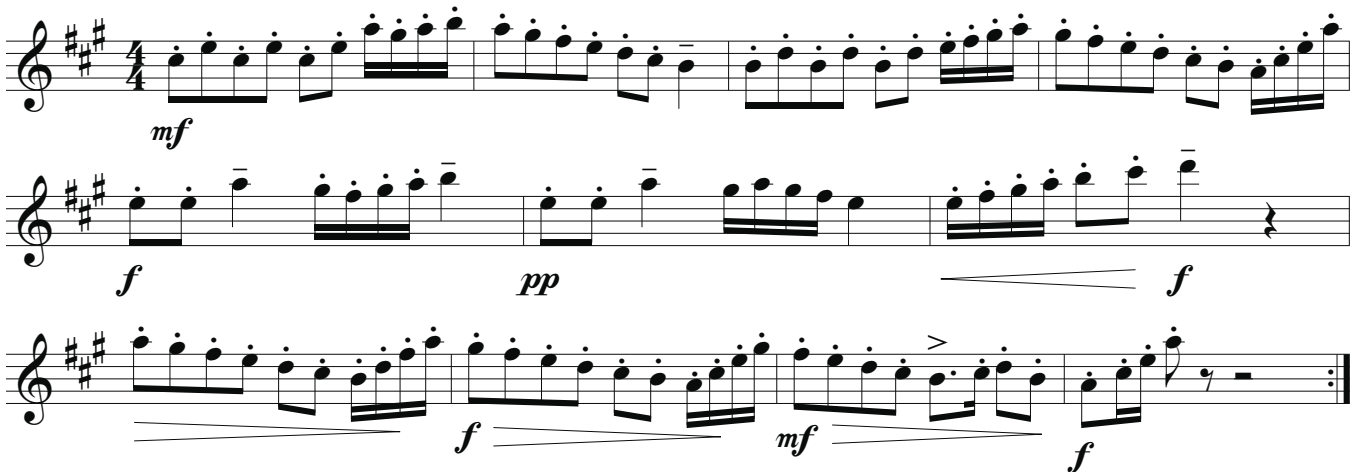
♩ = 96



Exercise 3

Etude Technical

♩ = 120



Make sure you take the repeat on your recording

OMEA All-State Symphonic Band Audition

Record and upload each exercise as a separate mp3 file.

Tenor Sax

Exercise 1 Chromatic Scale

♩ = 60



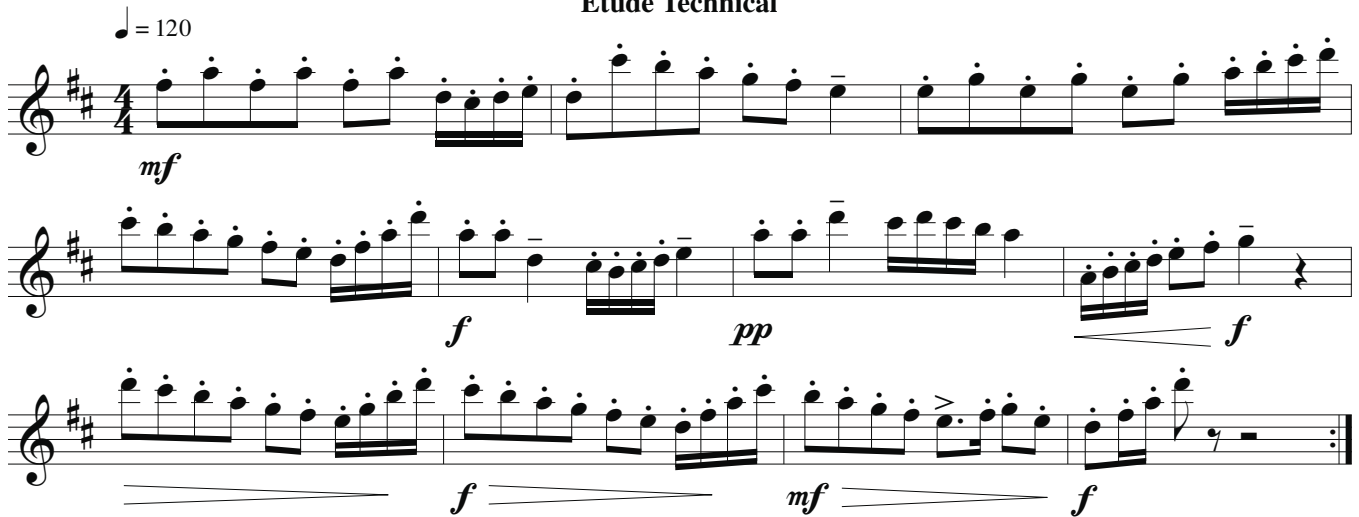
Exercise 2 Etude Espressivo

♩ = 96



Exercise 3 Etude Technical

♩ = 120



Make sure you take the repeat on your recording

OMEA All-State Symphonic Band Audition

Record and upload each exercise as a separate mp3 file.

Baritone Sax

Exercise 1 Chromatic Scale

♩ = 60

Musical notation for Exercise 1: Chromatic Scale. A single staff in treble clef with a key signature of one sharp (F#) and a 4/4 time signature. The tempo is marked as quarter note = 60. The piece consists of a single line of music with a chromatic scale starting on D4, moving up to G4, then down to D4, and finally a whole note G4.

Exercise 2 Etude Expressivo

♩ = 96

Musical notation for Exercise 2: Etude Expressivo. Three staves in treble clef with a key signature of one flat (Bb) and a 3/4 time signature. The tempo is marked as quarter note = 96. The piece features various dynamics including *mp*, *mf*, and *f*, along with accents and slurs.

Exercise 3 Etude Technical

♩ = 120

Musical notation for Exercise 3: Etude Technical. Three staves in treble clef with a key signature of three sharps (F#, C#, G#) and a 4/4 time signature. The tempo is marked as quarter note = 120. The piece is highly technical, featuring sixteenth-note patterns and various dynamics including *mf*, *f*, and *pp*.

Make sure you take the repeat on your recording

OMEA All-State Symphonic Band Audition

Record and upload each exercise as a separate mp3 file.

Trumpet
Euphonium TC

Exercise 1 Chromatic Scale

♩ = 60



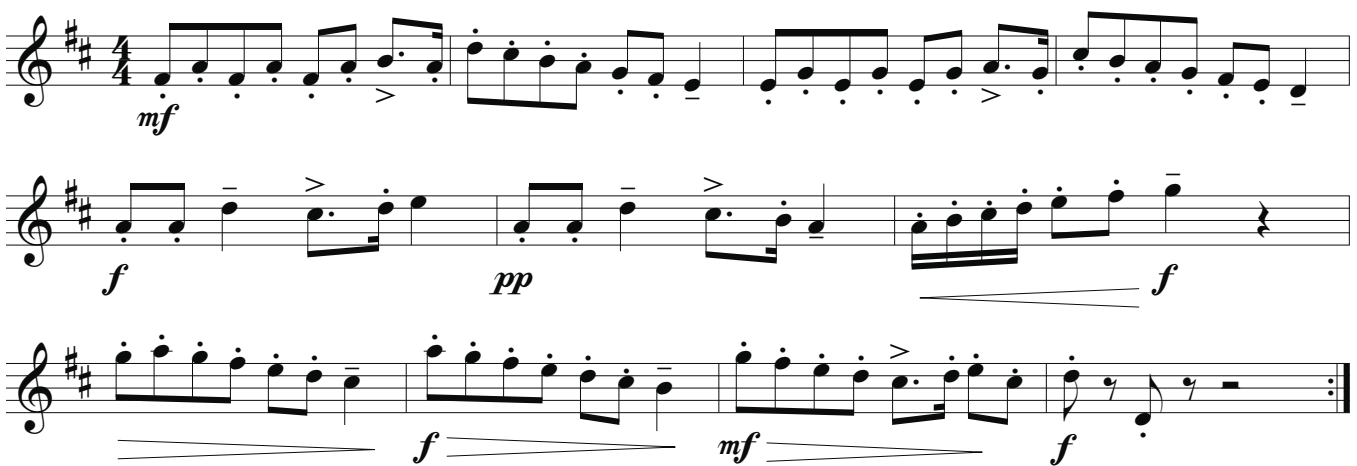
Exercise 2 Etude Espressivo

♩ = 96



Exercise 3 Etude Technical

♩ = 120



Make sure you take the repeat on your recording

OMEA All-State Symphonic Band Audition

Record and upload each exercise as a separate mp3 file.

F Horn

Exercise 1 Chromatic Scale

♩ = 60



Exercise 2 Etude Espressivo

♩ = 96



Exercise 3 Etude Technical

♩ = 120



Make sure you take the repeat on your recording

OMEA All-State Symphonic Band Audition

Record and upload each exercise as a separate mp3 file.

Trombone

Exercise 1

Chromatic Scale

♩ = 60

Musical notation for Exercise 1: Chromatic Scale. A single staff in bass clef, 4/4 time, with a key signature of two flats. The piece consists of a single line of chromatic eighth notes starting on G2 and ascending to G3, followed by a whole rest.

Exercise 2

Etude Espressivo

♩ = 96

Musical notation for Exercise 2: Etude Espressivo. Three staves in bass clef, 3/4 time, with a key signature of two flats. The piece features various dynamics including *mp*, *mf*, and *f*, with accents and slurs.

Exercise 3

Etude Technical

♩ = 120

Musical notation for Exercise 3: Etude Technical. Three staves in bass clef, 4/4 time, with a key signature of two flats. The piece features various dynamics including *mf*, *f*, and *pp*, with accents and slurs.

Make sure you take the repeat on your recording

OMEA All-State Symphonic Band Audition

Record and upload each exercise as a separate mp3 file.

Euphonium

Exercise 1 Chromatic Scale

♩ = 60

Musical notation for Exercise 1: Chromatic Scale. A single staff in bass clef, 4/4 time, with a tempo of 60. The scale starts on G2 and moves chromatically up to G3, then back down to G2.

Exercise 2 Etude Espressivo

♩ = 96

Musical notation for Exercise 2: Etude Espressivo. Three staves in bass clef, 3/4 time, with a tempo of 96. The piece features dynamic markings of *mp*, *mf*, and *f*, along with accents and slurs.

Exercise 3 Etude Technical

♩ = 120

Musical notation for Exercise 3: Etude Technical. Three staves in bass clef, 4/4 time, with a tempo of 120. The piece features dynamic markings of *mf*, *f*, and *pp*, along with accents and slurs.

Make sure you take the repeat on your recording

OMEA All-State Symphonic Band Audition

Record and upload each exercise as a separate mp3 file.

Tuba

Exercise 1 Chromatic Scale

♩ = 60



Exercise 2 Etude Espressivo

♩ = 96



Exercise 3 Etude Technical

♩ = 120



Make sure you take the repeat on your recording

OMEA All-State Symphonic Band Audition

Record and upload each exercise as a separate mp3 file.

Mallets

Exercise 1 Chromatic Scale

♩ = 60



Exercise 2 Etude Espressivo

♩ = 96



Exercise 3 Etude Technical

♩ = 120



Make sure you take the repeat on your recording

Percussionists must audition on two of the three instruments (snare drum, mallets, timpani)

OMEA All-State Symphonic Band Audition

Record and upload each exercise as a separate mp3 file.

Timpani

Exercise 1

Chromatic Scale

♩ = 60



Exercise 2

Etude Espressivo

♩ = 96



Exercise 3

Etude Technical

♩ = 120



Percussionists must audition on two of the three instruments (snare drum, mallets, timpani)